

CANNONBALL RAG

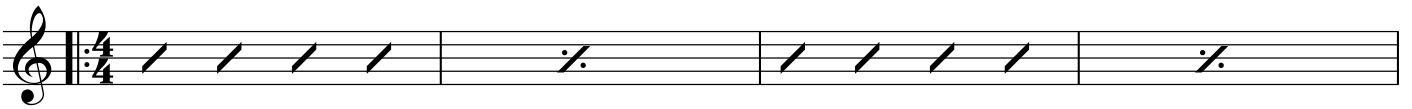
- CHART -

Merle Travis

A

E7

A7



D7

G7



B

D7

G



D7

G



C

17 C G D7 G

A musical staff in treble clef containing four measures of rhythmic notation. Each measure consists of five diagonal slashes. Above the staff, the chord labels C, G, D7, and G are positioned above the first, second, third, and fourth measures respectively. The number 17 is written to the left of the first measure. The staff ends with a double bar line.